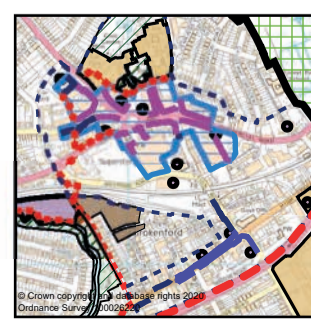
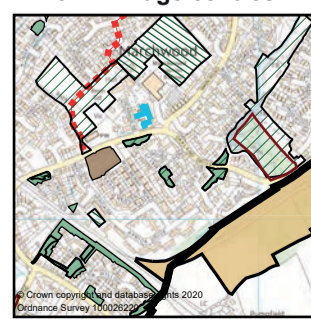
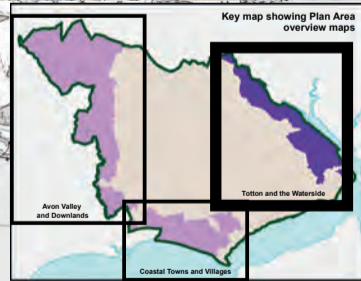


New Forest District outside the New Forest National Park
 Local Plan 2016-2036 Part One: Planning Strategy
Policies Map
Totton and the Waterside

- Plan Area boundary
- Built up area boundary
- Development site
- Housing
- Employment
- Site where special policies apply
- Town centre boundary
- Primary shopping area
- Primary shopping frontage
- Secondary shopping frontage
- Local shopping frontage
- Marine related business
- Town centre opportunity site
- SSSI
- SPA/SAC/Ramsar
- Local Nature Reserve
- SINC
- Existing public open space
- Proposed public open space
- Private/education recreational land
- Landscape feature
- Footpath improvement
- Cycleway improvement
- Transport proposal
- Road improvement
- Conservation area
- Allotments

This map should be read in conjunction with the text for further details of all policies that affect this area
NB: Designations made by other authorities are liable to alteration
 See Appendix A: Saved and deleted policies from the Core Strategy (2009) and Local Plan Part 2 (2014)
 Detailed mapping of saved and deleted policies can be found on the Local Plan Part 2: Sites and Development Management (2014) webpage at www.newforest.gov.uk/article/14184
 © Crown copyright and database rights 2020 Ordnance Survey 100026220
 Use of this data is subject to terms and conditions. You are not permitted to copy, sub-license, distribute or sell any of this data to third parties in any form.
 © Crown copyright All rights reserved Natural England (2020)
 © Crown copyright All rights reserved English Heritage (2020)
 © Crown copyright All rights reserved New Forest District Council (2020)
 SINC information provided by Hampshire Biodiversity Information Centre



Town/village centres

Hythe

Marchwood

Totton